



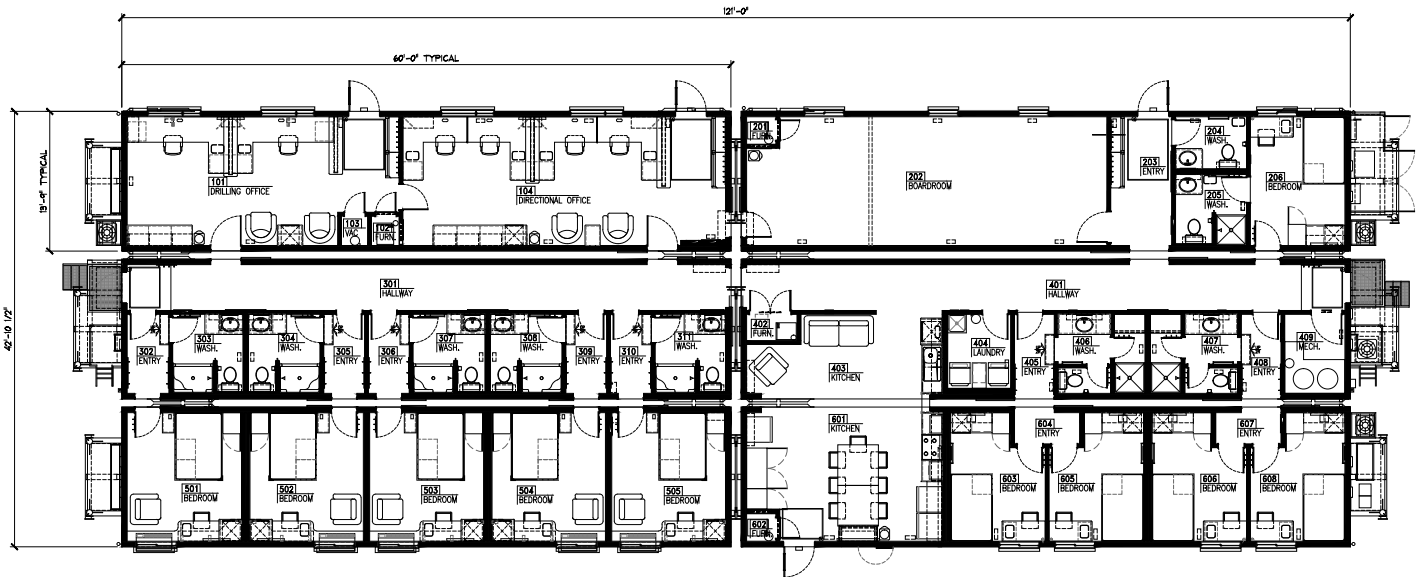
**Komplete**  
MODULAR SOLUTIONS

FieldREADY™

**Integrated Style**  
// Wellsite

42'-10 1/2" x 121'-0"

10-bed Skidded Integrated Wellsite Unit ("IWS")



## Highlights

### This Structure Contains:

- (5) executive-style bedrooms with ensuite washrooms
- (5) standard-style bedrooms with Jack-and-Jill washrooms
- Oversized showers
- Mudroom entrance
- Pillow-top mattresses
- Large boardroom area with full media hook-ups
- Complete kitchen-dining area
- Lounge area
- (8) offices/workstations
- Mudroom entrance
- Personal in-room desk and chair
- Manufactured with upgraded finishes and amenities
- Air conditioned/climate controlled for all season comfort
- Personal flat-screen TV's
- Internet, satellite, and cable TV ready
- Venetian blind window coverings
- Premium shared laundry area
- All electric
- Small site footprint (120'x42') and fully self-contained
- No external sewage lines or hook ups on back of IWS
- Quick connect utility harnesses
- Heavy duty skids for ease of transport and installation



**Komplete**  
MODULAR SOLUTIONS

FieldREADY™

**Integrated Style**  
// Wellsite

42'-10 1/2" x 121'-0"

10-bed Skidded Integrated Wellsite Unit ("IWS")



PRIVATE ROOMS | PRIVATE & JACK-AND-JILL WASHROOMS | KITCHEN-DINER | OFFICES & BOARDROOM  
UPGRADED FINISHES | CLIMATE CONTROLLED

[www.komplete.ca](http://www.komplete.ca)